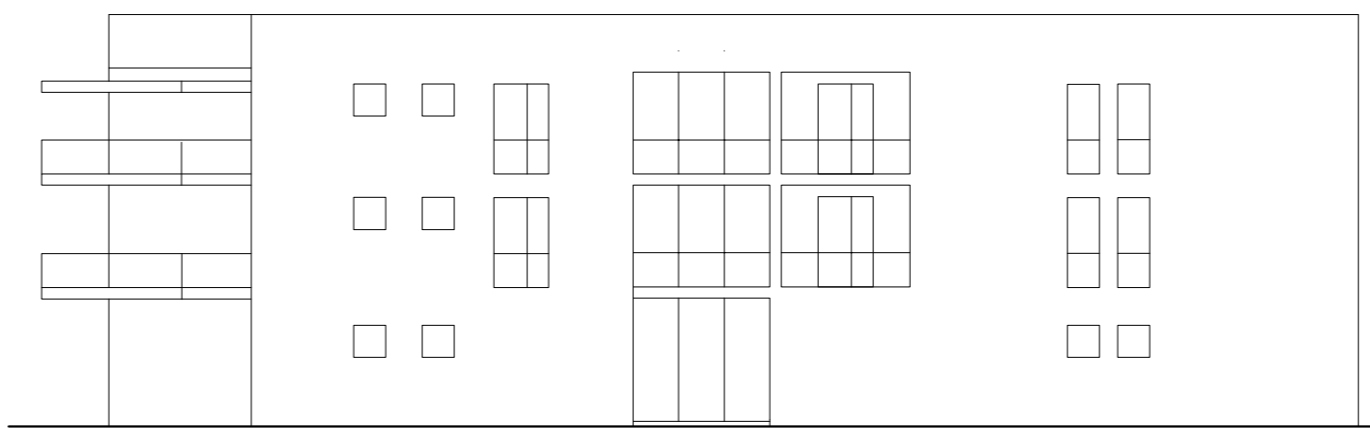
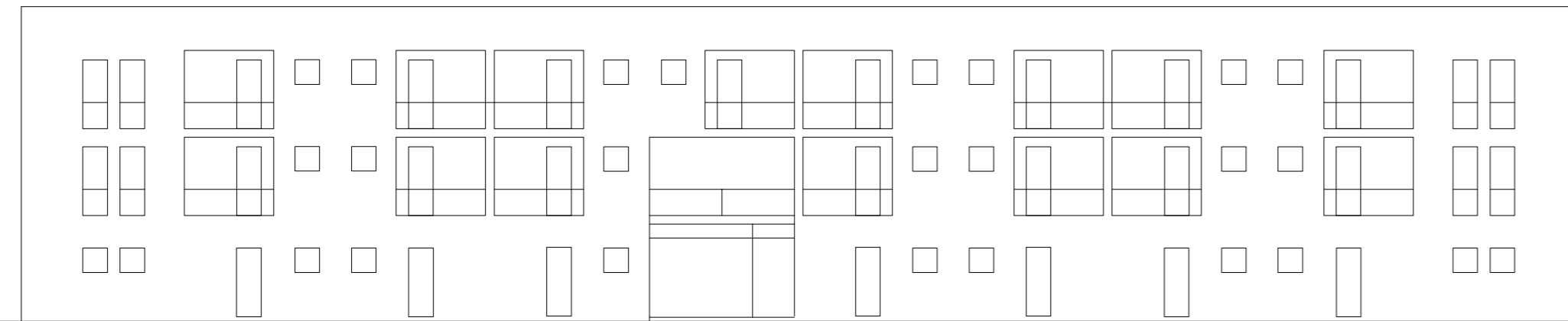
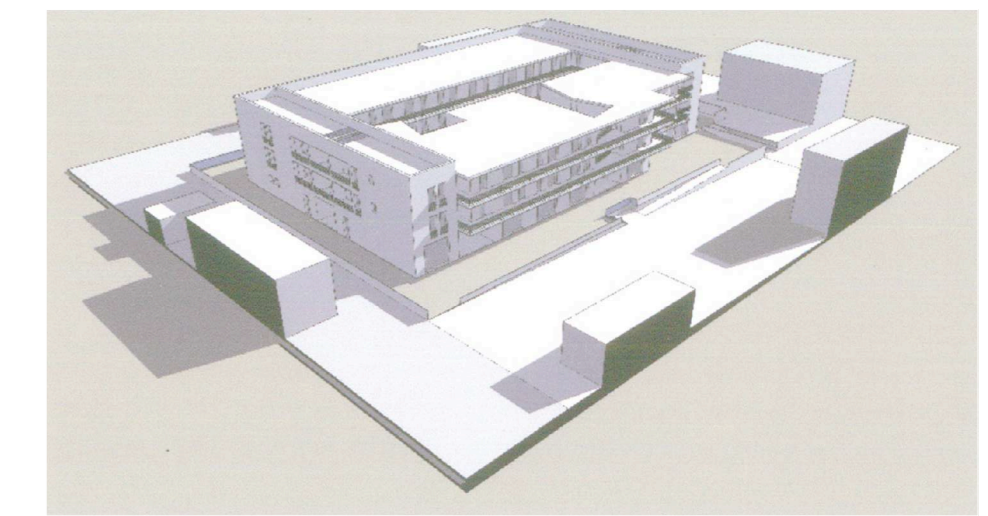


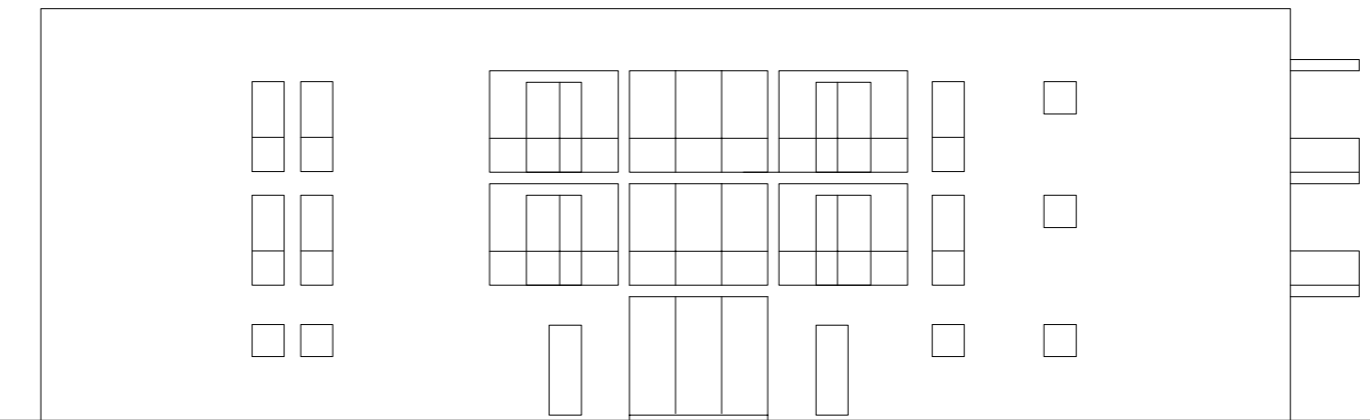
FRONTE NORD



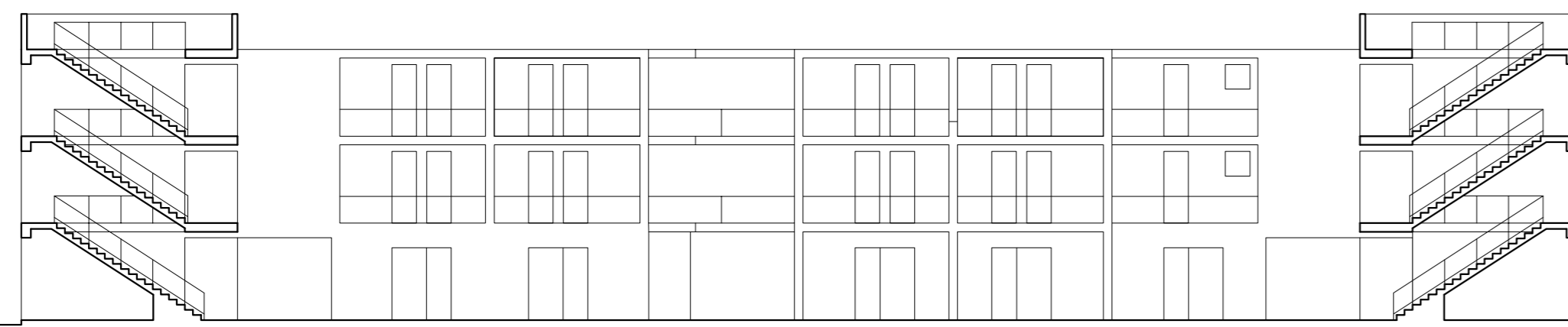
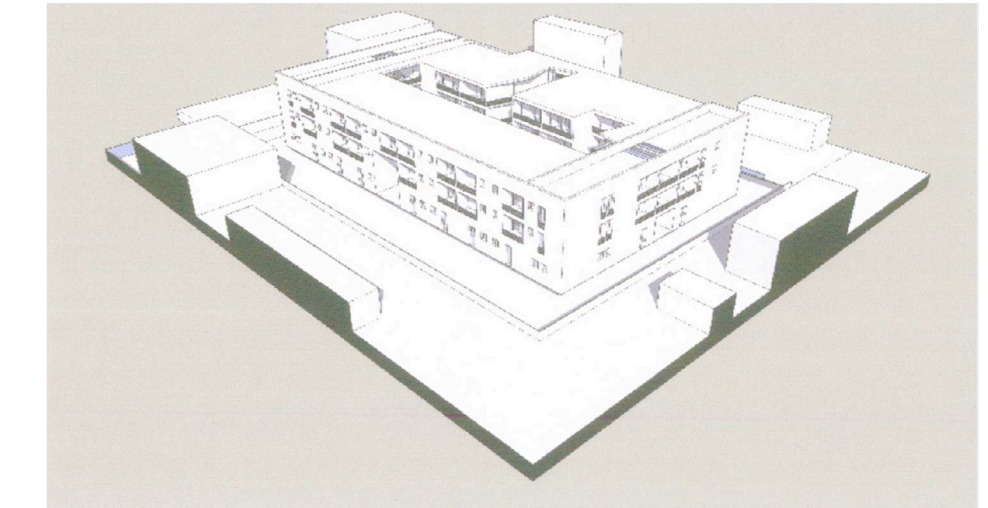
FRONTE OVEST



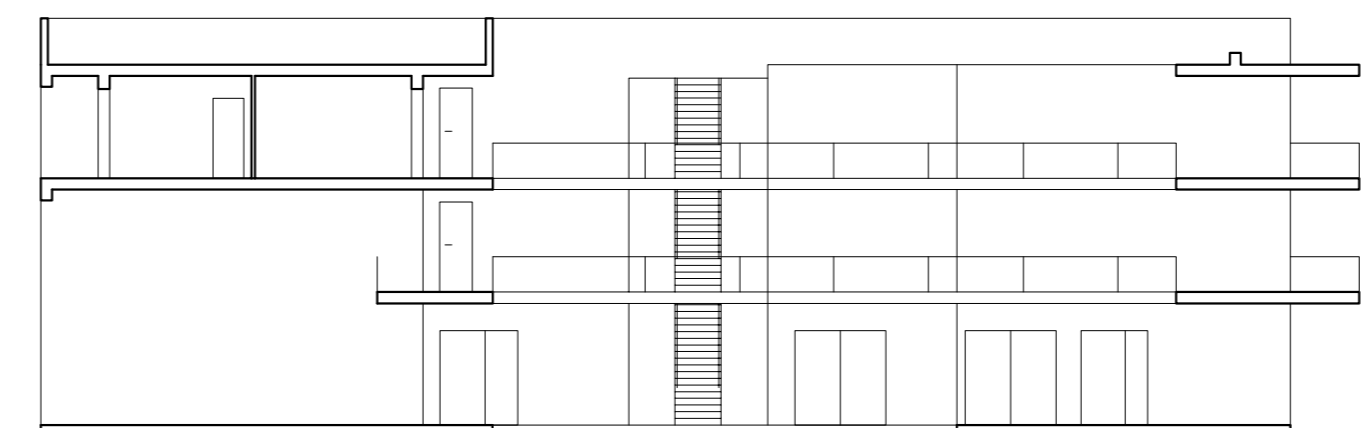
FRONTE SUD



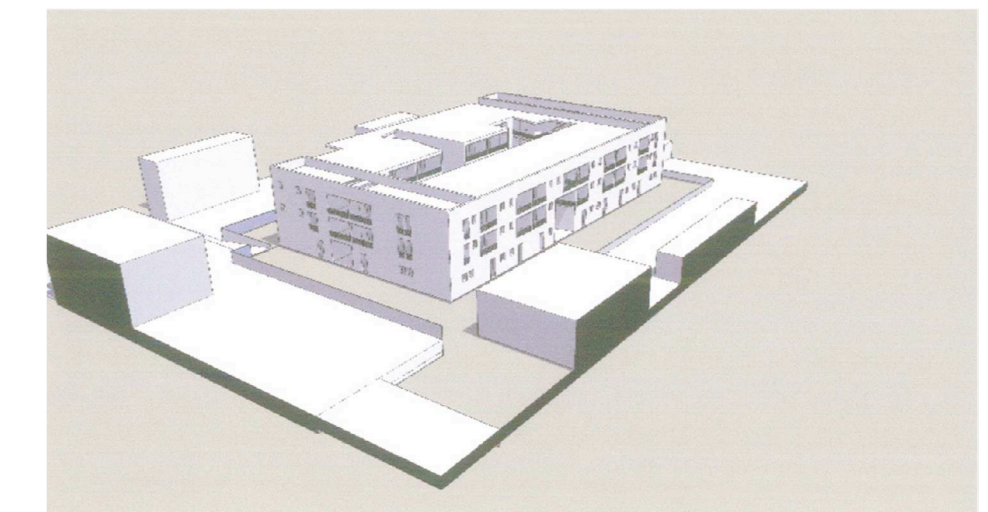
FRONTE EST



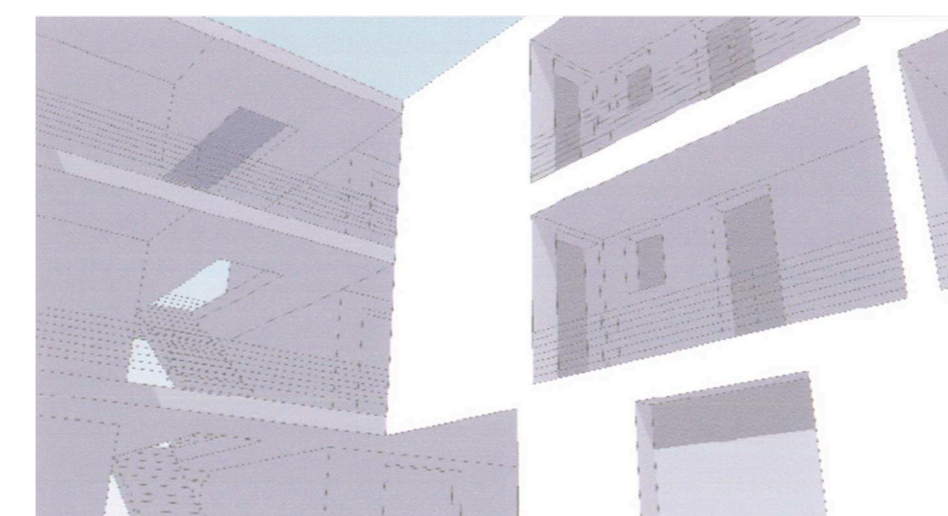
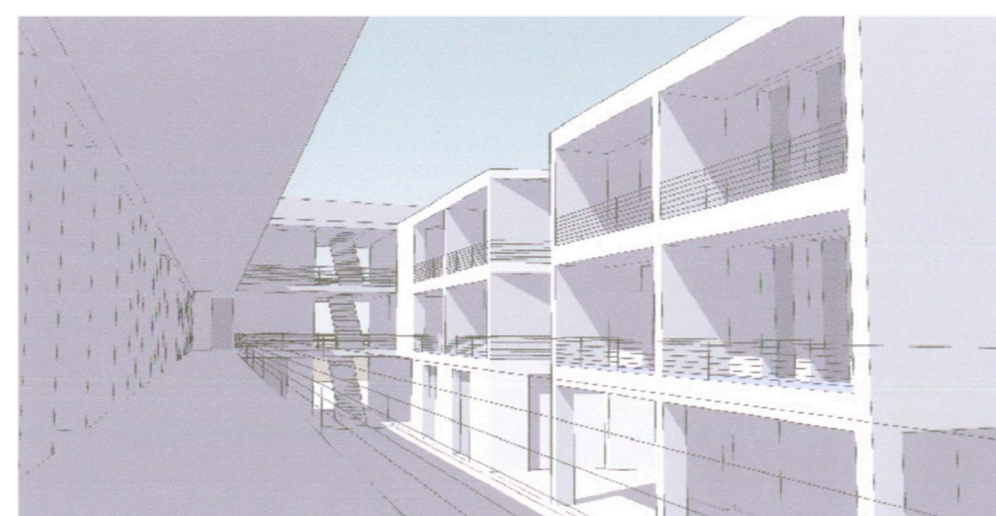
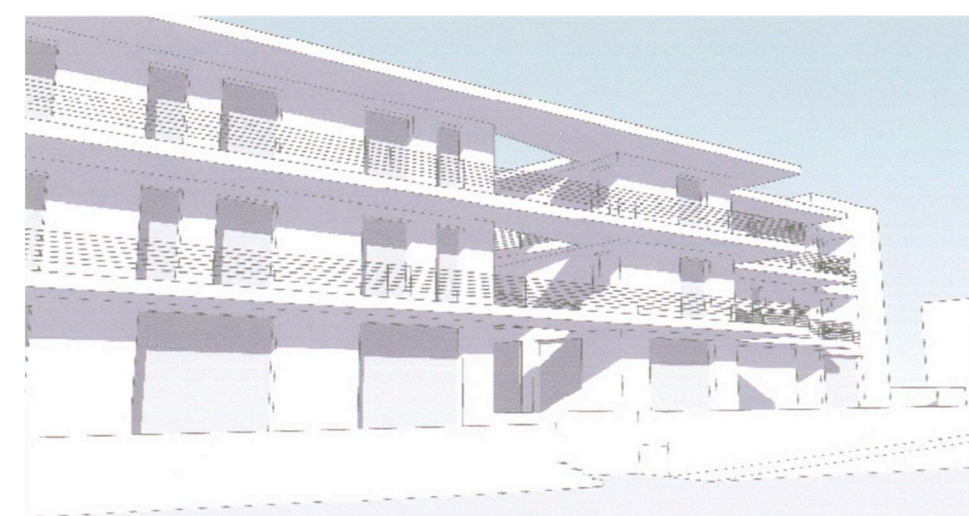
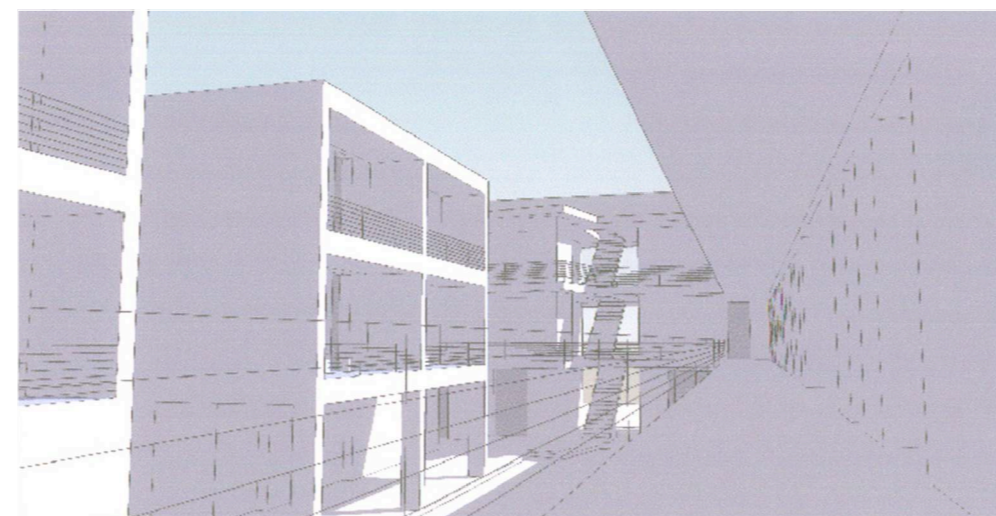
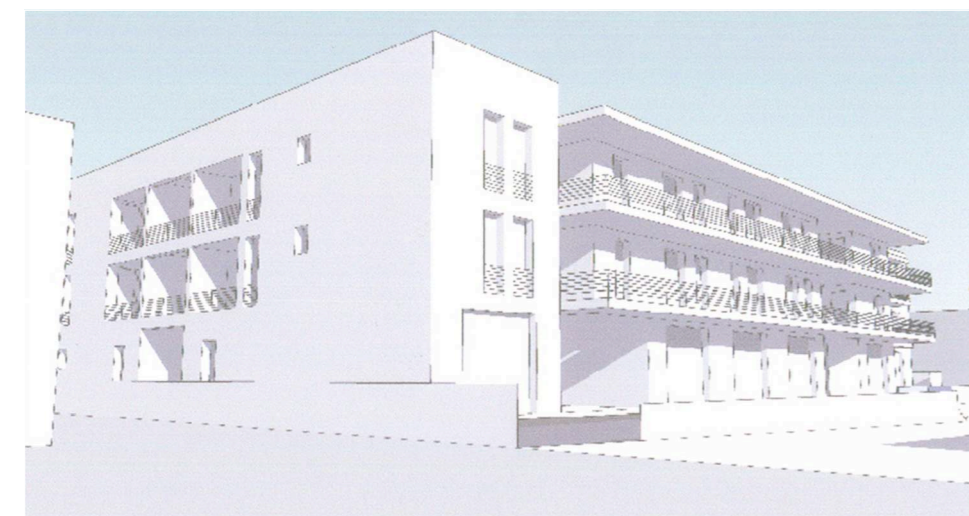
FRONTE INTERNO



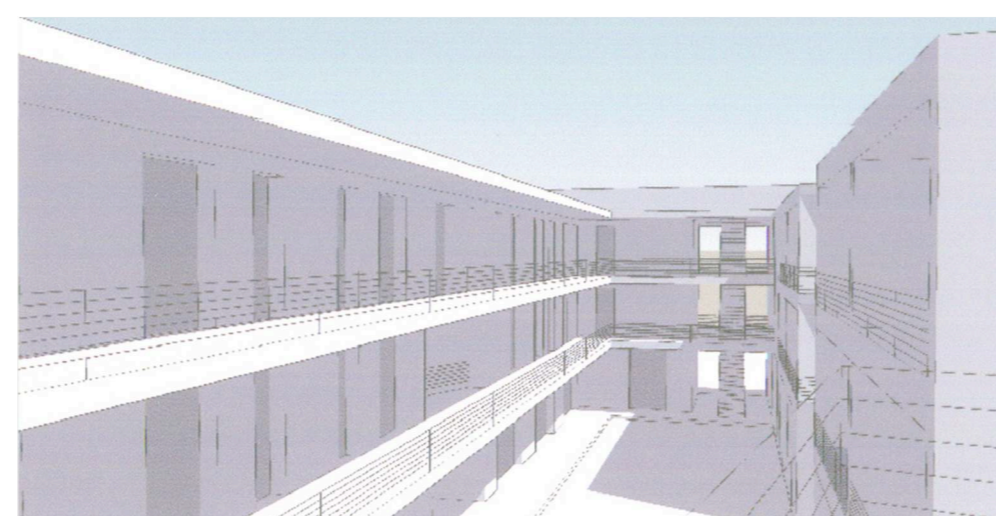
FRONTE INTERNO



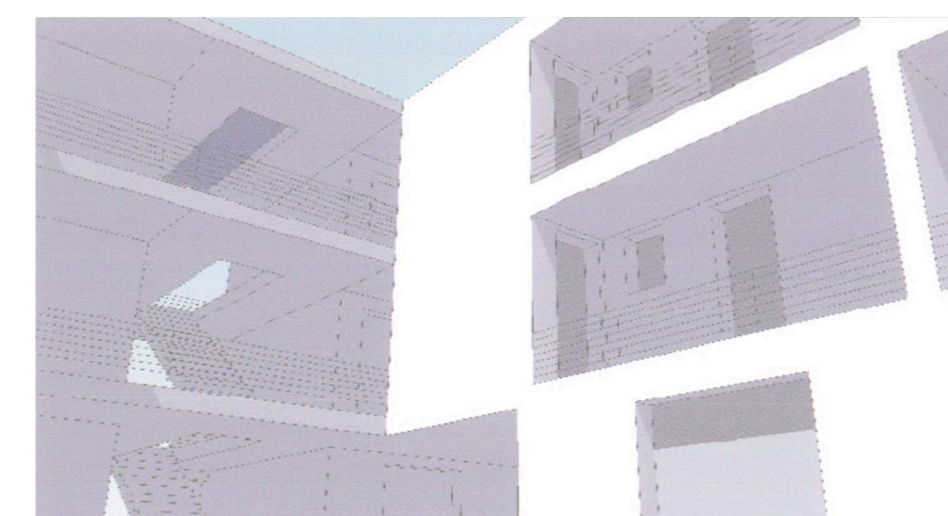
VISTE DALL'ALTO



VISTE SU STRADA



VISTE CORTE INTERNA



VISTE



REGIONE SICILIANA
COMUNE DI PANTELLERIA (TP)
ARDEA srl , San Antimo (NA)



PROGRAMMA INTEGRATO PER IL RECUPERO E PER LA RIQUALIFICAZIONE DELLA CITTA'
(D.D.G. Dipartimento Regionale delle Infrastrutture, della Mobilita' e dei Trasporti
del 29.06.2010, in G.U.R.S. n. 32 del 16.07.2010)

"IL SISTEMA DEI LUOGHI URBANI"



R3

SISTEMA RESIDENZIALE: AREA "COLOSSEO"

PROGETTO
Profili e sezioni, 1:200
Renders

PROGETTISTI
Prof. Arch. Francesco Cannone
Collaboratori :
Mariano Cassara', Gioacchino Certa
Dott. Arch. Salvatore Parisi
Collaboratori :
Dott.ssa Antonella Bonanno, Ing. Fabio Di Trapani, Ing. Anna Maria Giustiniani

ARDEA srl

IL RESPONSABILE DEL PROGRAMMA

L'AMMINISTRAZIONE